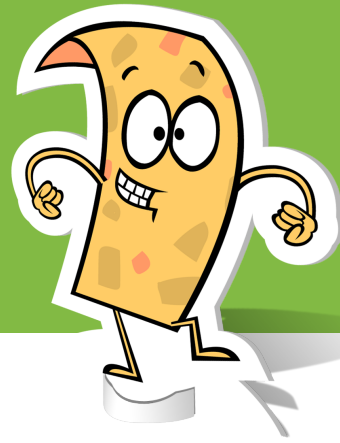
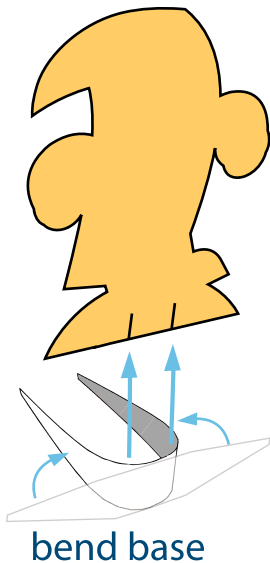


PAPER CUTOUT

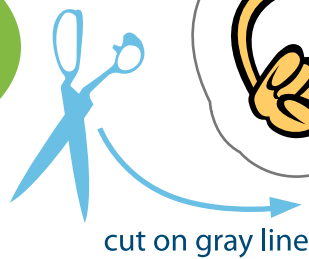
CORNCHIP *and* JELLYBEAN



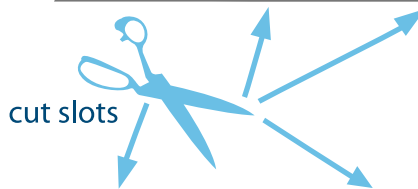
1. Either print directly onto card stock **OR** print on plain paper and glue parts to a heavier stock of paper for better stability.
2. Cut out character by cutting along the gray line around Cornchip and the gray line around the base.
3. Cut along the lines at bottom of Cornchip and top of base creating a "slot".
4. Slide base "slots" onto Cornchip character.
5. HAVE FUN WITH CORNCHIP!!!



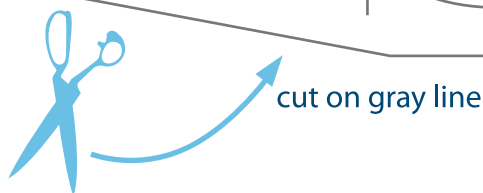
bend base



cut on gray line



cut slots



cut on gray line